



whitedriveproducts



SERIES
610



MEDIUM DUTY
Hydraulic Motor & Brake



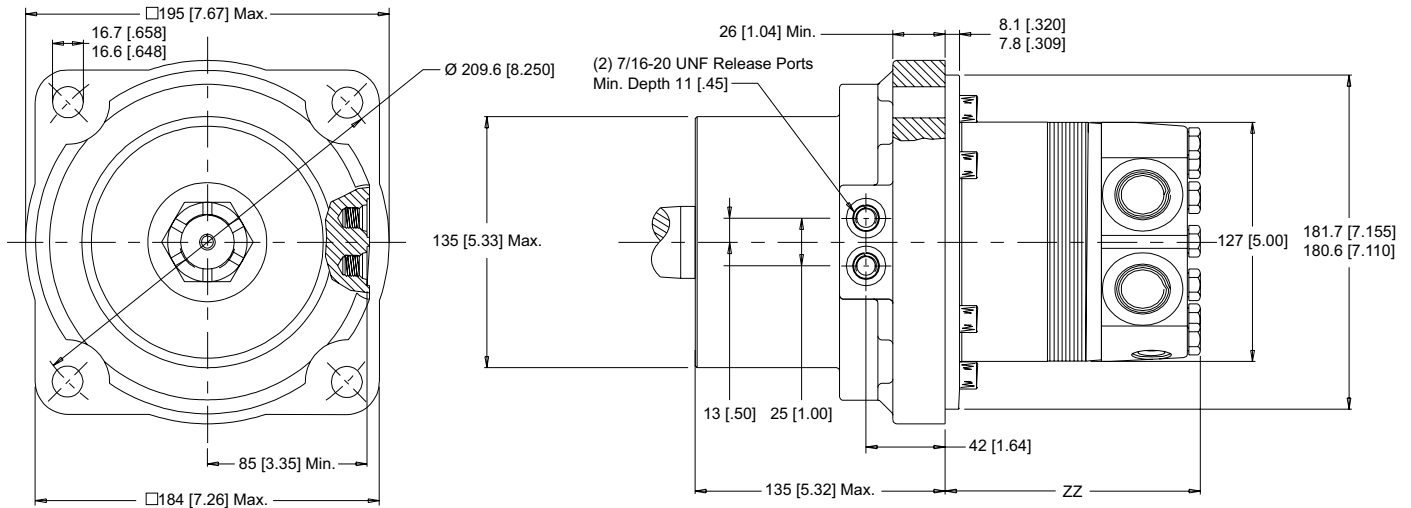


HOUSINGS

► Dimensions shown are without paint. Paint thickness can be up to 0.13 [.005].

4-HOLE, WHEEL BRAKE MOUNT

W2 End Ports **W8** Side Ports



► Porting options listed on pages 7-8.

TECHNICAL INFORMATION

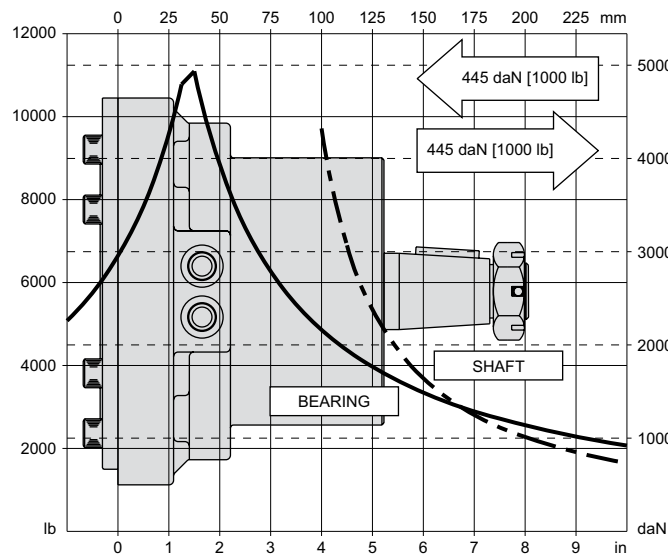
ALLOWABLE SHAFT LOAD / BEARING CURVE

The bearing curve represents allowable bearing loads based on ISO 281 bearing capacity for an L_{10} life of 2,000 hours at 100 rpm. Radial loads for speeds other than 100 rpm may be calculated using the multiplication factor table on page 10.

SPECIFICATIONS

Rated brake torque 1582 Nm [14000 lb-in]
 Initial release pressure 19 bar [275 psi]
 Full release pressure 33 bar [475 psi]
 Maximum release pressure 207 bar [3000 psi]
 Release volume 13-16 cm³ [0.8 - 1.0 in³]

WHEEL BRAKE MOUNTS



LENGTH & WEIGHT CHART

Dimension ZZ is the overall motor length from the rear of the motor to the mounting surface.

ZZ #	Endcovers on pg. 7 mm [in]	Endcovers on pg. 8 mm [in]	Weight kg [lb]
200	104 [4.11]	107 [4.22]	26.5 [58.4]
260	109 [4.30]	112 [4.41]	26.9 [59.4]
300	112 [4.43]	115 [4.54]	27.2 [60.0]
350	126 [4.98]	129 [5.09]	28.3 [62.5]
375	119 [4.68]	122 [4.79]	27.7 [61.1]
470	126 [4.98]	129 [5.09]	28.3 [62.5]
540	132 [5.22]	135 [5.33]	28.8 [63.6]
750	150 [5.93]	153 [6.04]	30.3 [66.9]

► 610 series motor/brake weights can vary ± 1 kg [2 lb] depending on model configurations such as housing, shaft, endcover, options etc.

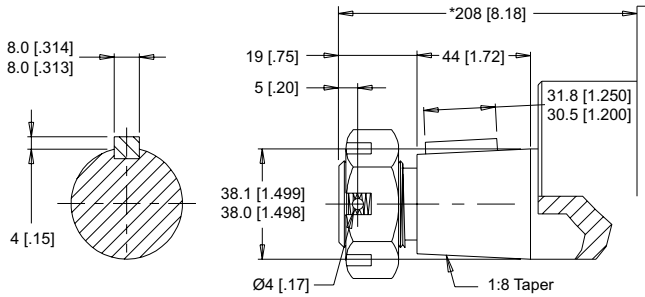
DR (610 Series)

Hydraulic Motor With Integral Spring Applied, Hydraulic Released Brake



SHAFTS

31 1-1/2" Tapered

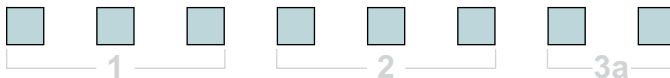


► A slotted hex nut is standard on this shaft.

Max. Torque: 1200 Nm [10600 lb-in]

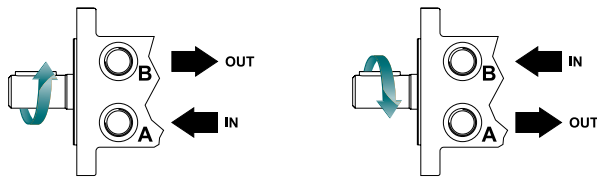
► *Shaft lengths vary ± 0.8 mm [0.030 in.]

ORDERING INFORMATION



1. CHOOSE SERIES DESIGNATION

610 Hydraulic Motor With Integral Hydraulic Brake



► The 610 series is bi-directional. Reversing the inlet hose will reverse shaft rotation.

2. SELECT A DISPLACEMENT OPTION

200	204 cm ³ /rev [12.4 in ³ /rev]	375	375 cm ³ /rev [22.8 in ³ /rev]
260	261 cm ³ /rev [15.9 in ³ /rev]	470	465 cm ³ /rev [28.3 in ³ /rev]
300	300 cm ³ /rev [18.3 in ³ /rev]	540	536 cm ³ /rev [32.7 in ³ /rev]
350	348 cm ³ /rev [21.2 in ³ /rev]	750	748 cm ³ /rev [45.6 in ³ /rev]

3a. SELECT MOUNT TYPE

▼ END MOUNTS

W2 4-Hole, Wheel Mount

▼ SIDE MOUNTS

W8 4-Hole, Wheel Mount

3b. SELECT PORT SIZE

▼ END PORT OPTIONS

1 7/8-14 UNF Offset

▼ SIDE PORT OPTIONS

- 2** G 3/4, Radial
- 3** 11/16" Hole, Aligned Manifold
- 5** 1 1/16-20 UN, Radial
- 6** 1 1/16-20 UN, Aligned
- 7** G 3/4, Radial

4. SELECT A SHAFT OPTION

31 1-1/2" Tapered



5. SELECT A PAINT OPTION

- A** Black
- Z** No Paint

6. SELECT A VALVE CAVITY / CARTRIDGE OPTION

A	None	F	121 bar [1750 psi] Relief
B	Valve Cavity Only	G	138 bar [2000 psi] Relief
C	69 bar [1000 psi] Relief	J	173 bar [2500 psi] Relief
D	86 bar [1250 psi] Relief	L	207 bar [3000 psi] Relief
E	104 bar [1500 psi] Relief		

► Valve cavity is not available on port option 3.

7. SELECT AN ADD-ON OPTION

- A** Standard
- C** Solid Hex Nut

8. SELECT A MISCELLANEOUS OPTION

- AA** None
- AC** Freeturning Rotor

North America

White Drive Products, Inc.
P.O. Box 1127
Hopkinsville, KY, USA 42241
Phone: +1.270.885.1110
Fax: +1.270.886.8462
infousa@whitedriveproducts.com

Europe

White Drive Products GmbH
Mannsnetterstrasse 34
D-88145 Opfenbach, Germany
Phone: +49.8385.924988.0
Fax: +49.8385.924988.9
infoeu@whitedriveproducts.com

Asia

White (China) Drive Products Co., Ltd.
1-8 Ning Zhen Gong Lu
Zhenjiang, 212021, Jiangsu, China
Phone: +86 511 5729988
Fax: +86 511 5728921
infochina@whitedriveproducts.com

Delivering The Power
To Get Work Done!



whitedriveproducts